

DLP first generation Replacement

Client: ComEd

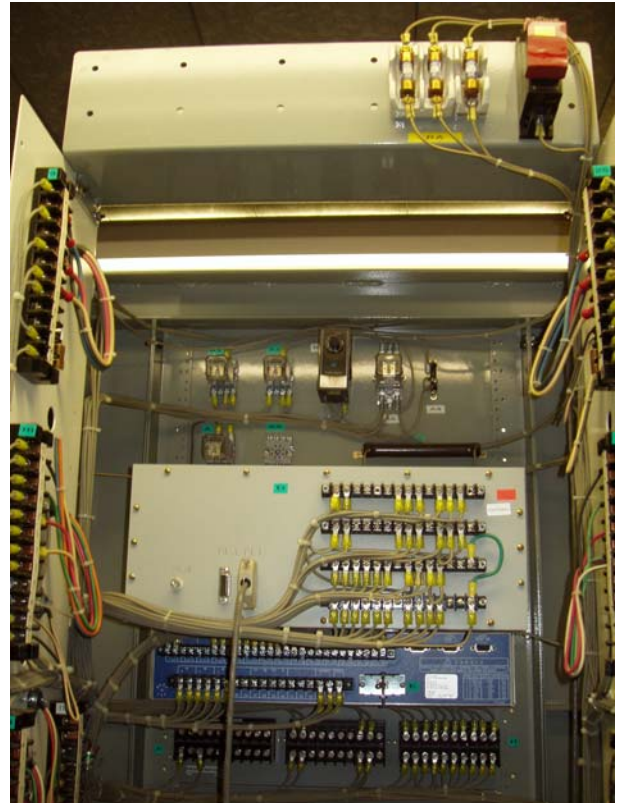
The scope of this project was to provide the engineering and design for an old DLP first generation replacement in three stations with SEL relays. This required the replacement of the DLP with SEL-311C in two stations, and with SEL-321 in the third station.

In the first station, the DLP was replaced with SEL-311C. All the connections have been revised to accommodate the new relay. The new relay was connected to both new and existing SCADA points.

In the second station, the DLP was replaced with SEL-321. All the connections have been revised to accommodate the new relay. A new SEL-2032 was installed in the existing communication cabinet and was connected to the upper tier. All the existing 138kV protection relays were connected to the new SEL-2032. SCADA system was revised to accommodate this change.

In the third station, the DLP was replaced with SEL-311C. All the connections have been revised to accommodate the new relay. An old RFL was replaced with new SEL-2032 on the relay panel. All 138kV Protection relays were connected to the new SEL-2032. SCADA system was revised to accommodate this change.

This project was successfully completed under a compressed schedule with several schedule revisions in order to accommodate the client timetable.



To learn more, please contact us at:

QualiTECH Engineering LLC

725 S. Wells Street, Suite 600
Chicago, Illinois 60607

Phone: 312-322-0694
Fax: 312-322-0699
Email: info@qualitechllc.com
Website: www.qualitechllc.com